

**(DANRE) pkn2 Antibody (N-term)**  
**Purified Rabbit Polyclonal Antibody (Pab)**  
**Catalog # Azb18708a**

**Specification**

---

**(DANRE) pkn2 Antibody (N-term) - Product Information**

Application	WB,E
Primary Accession	<a href="#">A7MBL8</a>
Reactivity	Zebrafish
Host	Rabbit
Clonality	Polyclonal
Isotype	Rabbit IgG
Antigen Region	108-141

**(DANRE) pkn2 Antibody (N-term) - Additional Information**

**Gene ID** 567134

**Other Names**

Serine/threonine-protein kinase N2, PKN gamma, Protein kinase C-like 2, Protein-kinase C-related kinase 2, pkn2, prk2, prkcl2

**Target/Specificity**

This (DANRE) pkn2 antibody is generated from a rabbit immunized with a KLH conjugated synthetic peptide between 108-141 amino acids DANRE pkn2.

**Dilution**

WB~~1:1000

E~~Use at an assay dependent concentration.

**Format**

Purified polyclonal antibody supplied in PBS with 0.09% (W/V) sodium azide. This antibody is purified through a protein A column, followed by peptide affinity purification.

**Storage**

Maintain refrigerated at 2-8°C for up to 2 weeks. For long term storage store at -20°C in small aliquots to prevent freeze-thaw cycles.

**Precautions**

(DANRE) pkn2 Antibody (N-term) is for research use only and not for use in diagnostic or therapeutic procedures.

**(DANRE) pkn2 Antibody (N-term) - Protein Information**

**Name** pkn2

**Synonyms** prk2, prkcl2

**Function** Pkc-related serine/threonine-protein kinase and Rho/Rac effector protein that participates in specific signal transduction responses in the cell. May play a role in the regulation of cell cycle progression, actin cytoskeleton assembly, cell migration, cell adhesion and transcription activation signaling processes (By similarity).

**Cellular Location**

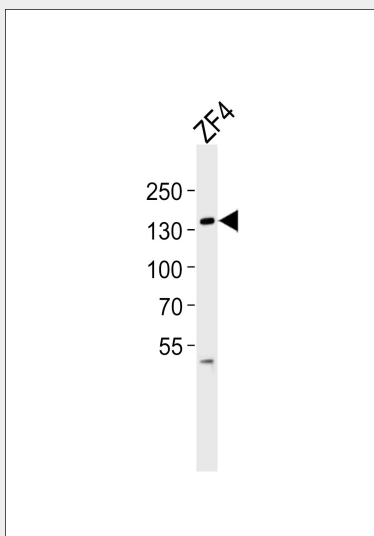
Cytoplasm. Nucleus. Membrane. Cell projection, lamellipodium Cytoplasm, cytoskeleton. Cleavage furrow Midbody. Cell junction

**(DANRE) pkn2 Antibody (N-term) - Protocols**

Provided below are standard protocols that you may find useful for product applications.

- [Western Blot](#)
- [Blocking Peptides](#)
- [Dot Blot](#)
- [Immunohistochemistry](#)
- [Immunofluorescence](#)
- [Immunoprecipitation](#)
- [Flow Cytometry](#)
- [Cell Culture](#)

**(DANRE) pkn2 Antibody (N-term) - Images**



Western blot analysis of lysate from ZF4 cell line, using (DANRE) pkn2 Antibody (N-term)(Cat. #Azb18708a). Azb18708a was diluted at 1:1000. A goat anti-rabbit IgG H&L(HRP) at 1:5000 dilution was used as the secondary antibody. Lysate at 35ug.

**(DANRE) pkn2 Antibody (N-term) - Background**

Pkc-related serine/threonine-protein kinase and Rho/Rac effector protein that participates in specific signal transduction responses in the cell. May play a role in the regulation of cell cycle progression, actin cytoskeleton assembly, cell migration, cell adhesion and transcription activation signaling processes (By similarity).